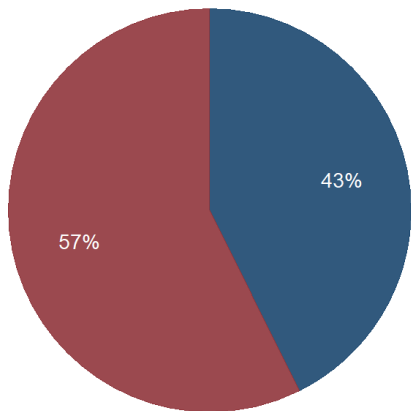


Kentucky Quarterly Coal Report

April to June 2018

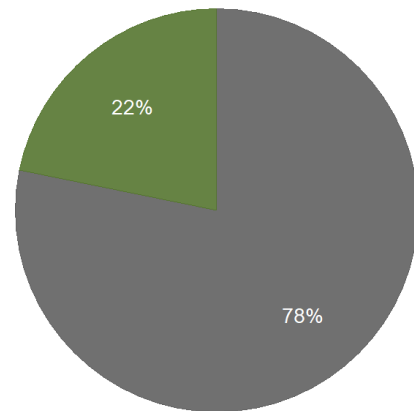
Kentucky Coal Production by Region, Q2-2018



Legend: Eastern Kentucky (Blue), Western Kentucky (Red)

Kentucky Energy Database, EEC-DEDI & US-DOL-MSHA-MDRS Queried on: 1 Aug 2018

Kentucky Coal Production by Mine Type, Q2-2018



Legend: Underground (Grey), Surface (Green)

Kentucky Energy Database, EEC-DEDI & US-DOL-MSHA-MDRS Queried on: 1 Aug 2018

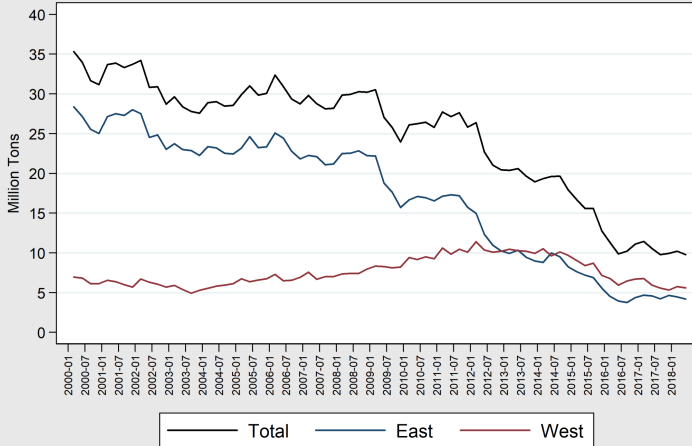
Region	Q2 Tonnage	YOY Change	Quarter Change
Total	9,786,955	-7.1%	-4.2%
West KY	5,611,408	-5.7%	-2.5%
East KY	4,175,547	-9.0%	-6.3%

Second quarter production declined by 4.2 percent from the first quarter; year-over-year production decreased by 7.1 percent.

Mine Type	Q2 Tonnage	YOY Change	Quarter Change
Total	9,786,955	-7.1%	-4.2%
Underground	7,654,422	-4.7%	-5.1%
Surface	2,132,533	-14.8%	-0.8%

Coal production at underground mines totaled 7.6 million tons during the second quarter of 2018, a decrease of 4.7 percent from the previous year.

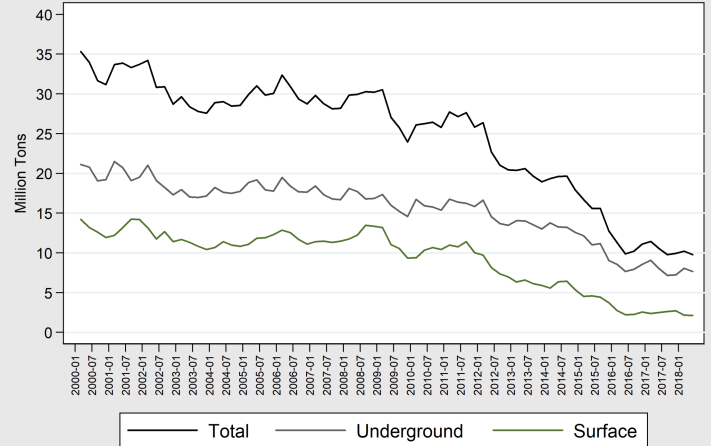
Kentucky Quarterly Coal Production by Region, 2000-2018



Kentucky Energy Database, EEC-DEDI & US-DOL-MSHA-MDRS Queried on: 1 Aug 2018

Eastern Kentucky decreased output by 9.0 percent from the second quarter of 2017 to 4.1 million tons. Western Kentucky decreased output by 5.7 percent to 5.6 million tons. Western Kentucky mines accounted for 57 percent of Kentucky coal production while eastern Kentucky accounted for 43 percent.

Kentucky Quarterly Coal Production by Mine Type, 2000-2018

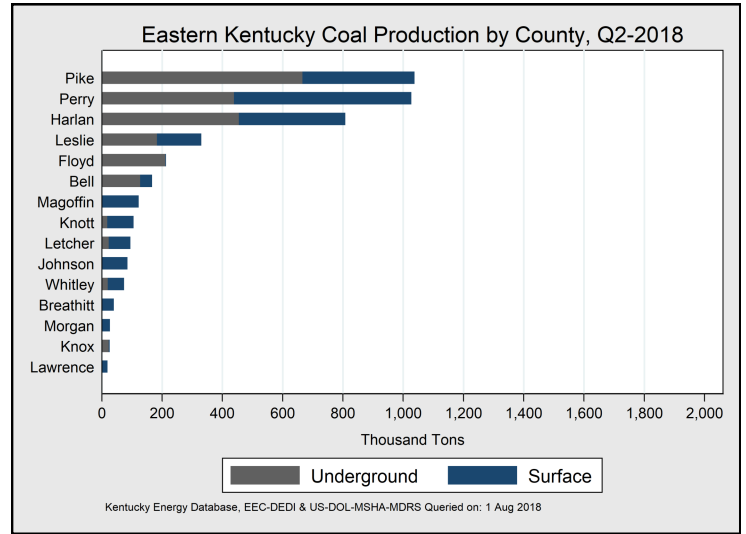
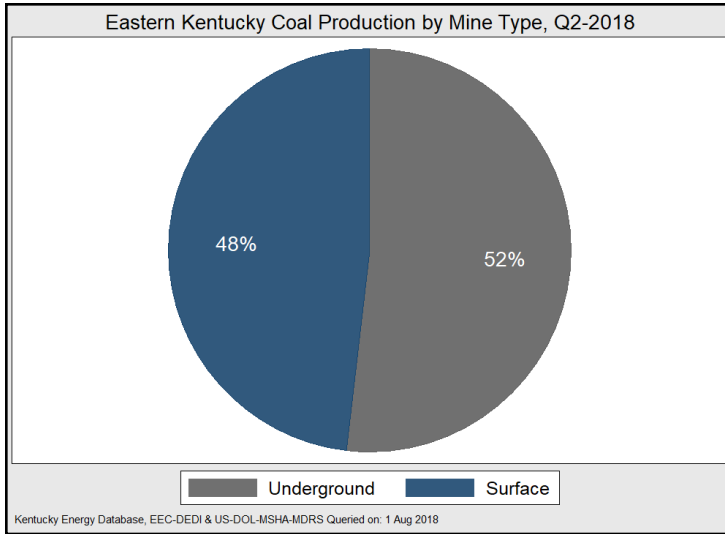


Kentucky Energy Database, EEC-DEDI & US-DOL-MSHA-MDRS Queried on: 1 Aug 2018

In the second quarter of 2018, surface mines in Kentucky produced over 2.1 million tons of coal, a 14.8 percent decrease from the second quarter of 2017. Underground mines accounted for 78 percent of coal production in the Commonwealth, while surface mines contributed 22 percent.

Eastern Kentucky Coal Production

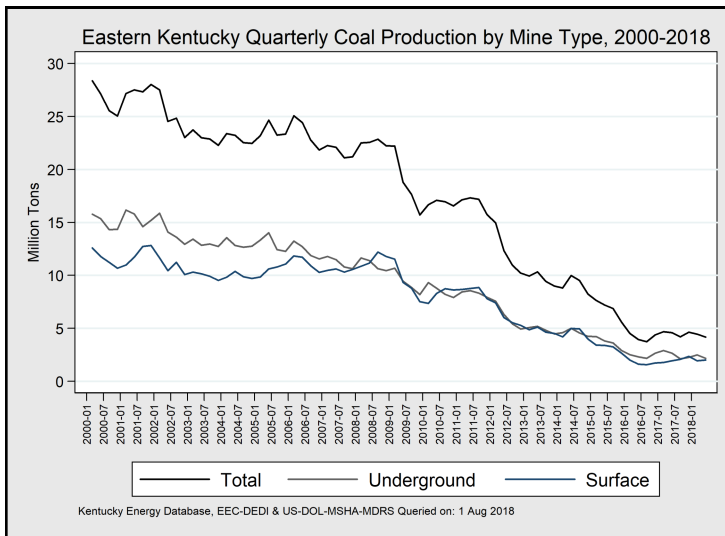
April to June 2018



Mine Type	Q2 Tonnage	YOY Change	Quarter Change
Total	4,175,547	-9.0%	-6.3%
Underground	2,164,017	-18.4%	-13.6%
Surface	2,011,530	+4.0%	+3.0%

Eastern County	Q2 Tons	YOY Change	Quarter Change
Pike	1,037,306	-6.6%	-12.3%
Perry	1,027,096	-2.4%	+1.9%
Harlan	807,956	-12.2%	+0.3%
Leslie	330,191	+12.0%	+24.5%
Floyd	213,245	-29.2%	+9.2%
Bell	166,871	-40.4%	-32.9%
Magoffin	122,733	+309.2%	+5.6%
Knott	105,566	+10.7%	-27.6%
Letcher	94,566	+78.2%	-46.1%
Johnson	85,089	-52.0%	-7.1%
Whitley	73,907	+17.3%	+9.4%
Breathitt	39,620	+376.6%	-36.5%
Morgan	26,909	-	+30.1%
Knox	25,942	+721.7%	-47.5%
Lawrence	18,550	+106.0%	-9.2%

Underground production in eastern Kentucky decreased by 18.4 percent from the second quarter of 2017.

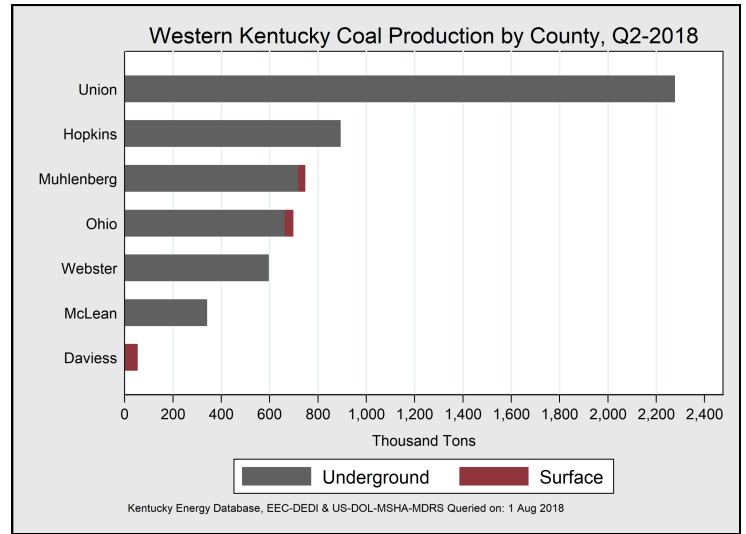
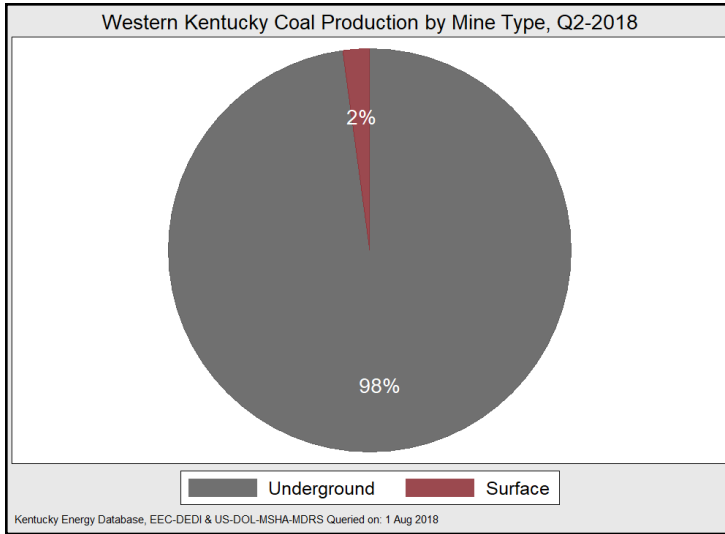


Quarterly surface production increased by 4 percent from the 2nd quarter of 2017 and 3 percent from the previous quarter. Surface production totaled 2.0 million tons.

Preliminary data indicate that Pike County remained the top coal producing county in eastern Kentucky during the second quarter of 2018 by mining just under 1.03 million tons, a 12.3 percent decrease from the previous quarter and 6.6 percent decrease from the previous year. Perry County produced 10,000 tons less than Pike County to rank second in coal production in eastern Kentucky. Harlan remained in third in production with just over 800,000 tons.

Western Kentucky Coal Production

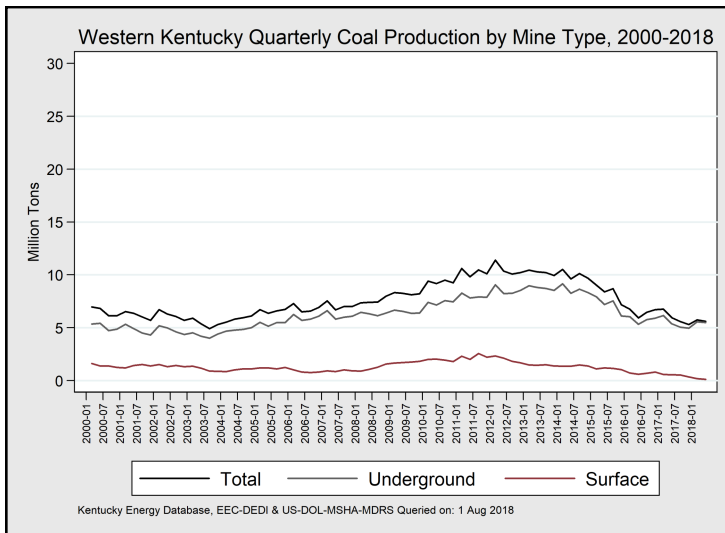
April to June 2018



Mine Type	Q2 Tonnage	YOY Change	Quarter Change
Total	5,611,408	-5.7%	-2.5%
Underground	5,490,405	+2.1%	-1.3%
Surface	121,003	-78.8%	-38.7%

County	Q2 Tonnage	YOY Change	Quarter Change
Union	2,277,336	+8.9%	-6.4%
Hopkins	894,345	-2.1%	-11.5%
Muhlenberg	748,425	+0.1%	+20.5%
Ohio	699,029	-36.9%	+0.5%
Webster	596,696	-10.5%	-7.2%
McLean	341,269	-6.9%	+11.4%
Daviess	54,308	-2.3%	+12.2%

Coal production in western Kentucky underground mines increased by 2.1 percent from the 2nd quarter of 2017.



The photo above features equipment and a miner at River View Coal Mine in Union County. Photo taken by Aaron Camenisch for the Energy and Environment Cabinet in 2010.

Western Kentucky coal production decreased by 5.7 percent from the 2nd quarter of 2017, to just over 5.6 million tons. Underground production increased by 2.1 percent from the 2nd quarter of 2017 while surface mining operations showed a decrease of 78.8 percent to 121,000 tons.

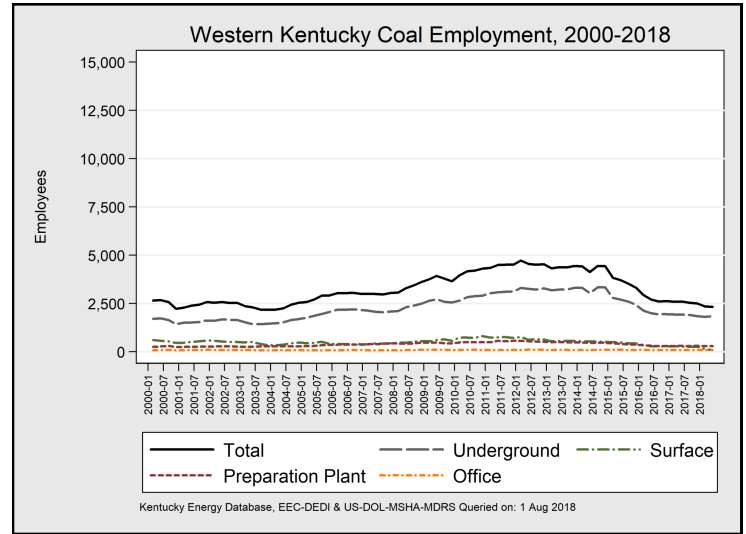
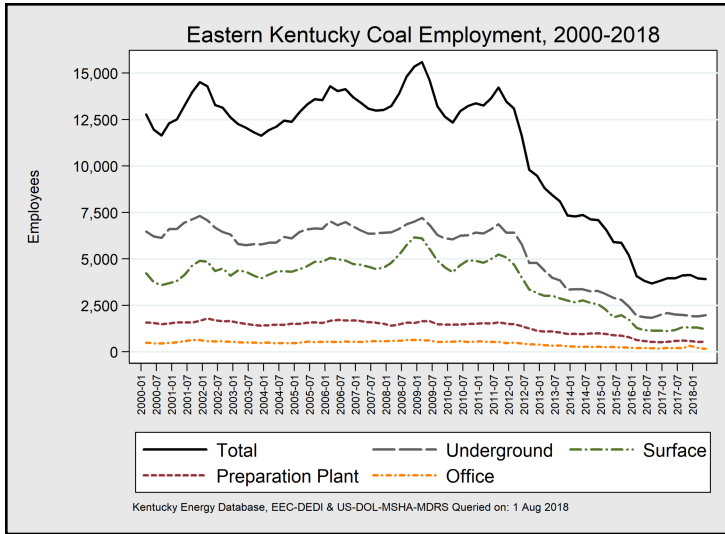
Union County experienced the largest year over year production increase at 8.9 percent. Muhlenberg County had the largest quarterly increase at 20.5 percent.

Union County mined 2.2 million tons of coal during the second quarter of 2018, an 8.9 percent increase from the previous year and a 6.4 percent decrease from the previous quarter.

All other counties in western Kentucky except Muhlenberg County and Union County experienced declines in production since the second quarter of 2017.

Kentucky Coal Mine Employment

April to June 2018



East KY	Q2	YOY Change	Quarter Change
Total	3,909	-42 -1.1%	-39 -1.0%
Harlan	955	+71 +8.0%	+128 +15.5%
Pike	915	+20 +2.2%	-61 -6.3%
Perry	687	-1 -0.2%	-32 -4.5%
Leslie	295	+84 +39.8%	+37 +14.3%
Bell	233	-152 -39.5%	-99 -29.8%
Floyd	231	+2 +0.9%	+0 +0.0%
Whitley	124	-1 -0.8%	+0 +0.0%
Knott	97	+15 +18.3%	-4 -4.0%
Letcher	94	+65 +224.1%	13 +16.1%
Knox	57	+13 +29.6%	-13 -18.6%
Johnson	49	-27 -35.5%	-8 -14.0%
Martin	48	-133 -73.5%	+22 +84.6%
Magoffin	42	+21 +100.0%	-5 -10.6%
Lawrence	29	+8 +38.1%	4 +16.0%
Boyd	16	-11 -40.7%	-14 -46.7%
Clay	16	+2 +14.3%	+2 +14.3%
Breathitt	8	+2 +33.3%	-7 -46.7%
Morgan	7	- -	+1 +16.7%
McCreary	4	+0 +0.0%	+0 +0.0%
Laurel	2	-2 -50.0	-3 -60.0

West KY	Q2	YOY Change	Quarter Change
Total	2,329	-275 -10.6%	-17 -0.7%
Union	687	+18 +2.7%	+6 +0.9%
Hopkins	447	+1 +0.2%	-4 -0.9%
Muhlenberg	374	-29 -7.2%	+49 +15.1%
Webster	291	-17 -5.5%	-7 -2.4%
Ohio	286	-209 -42.2%	-34 -10.6%
McLean	164	-15 -8.4%	-18 -9.9%
Marshall	44	-16 -26.7%	-1 -2.2%
Daviess	24	+4 +20.0%	-2 -7.7%
Livingston	12	-7 -36.8%	-1 -7.7%

Description	Q2	YOY Change	Quarter Change
KY Total	6,238	-317 -4.8%	-56 -0.9%
Underground	3,819	-115 -2.9%	+96 +2.6%
Surface	1,326	-118 -8.2%	-121 -8.4%
Preparation Plant	847	-41 -4.6%	+20 +2.4%
Office	246	-43 -14.9%	-51 -17.2%

Eastern Kentucky coal mines decreased employment by 42 jobs or 1.1 percent on a year over year basis. Western Kentucky decreased employment by 275 or 10.6 percent on a year over year basis. Western Kentucky decreased employment by 17 jobs or 0.7 percent compared to the previous quarter.

During the second quarter of 2018, Kentucky coal mines decreased total employment by 56 jobs, a 0.9 percent drop from the first quarter of 2018. On a year over year basis, Kentucky coal mines decreased total employment by 4.8 percent or 317 jobs.

energy.ky.gov/Pages/CoalFacts.aspx

Date		Kentucky Total				Eastern Kentucky				Western Kentucky			
		Average		Tons of Coal		Average		Tons of Coal		Average		Tons of Coal	
		Employment		Produced		Employment		Produced		Employment		Produced	
		Annual	Quarter	Annual	Quarter	Annual	Quarter	Annual	Quarter	Annual	Quarter	Annual	Quarter
2009	Q3		17,075		25,979,240		13,278		17,850,570		3,797		8,128,670
	Q4		16,380		24,127,190		12,729		15,902,420		3,651		8,224,772
2010	Q1	17,115	16,378	105,554,104	26,304,890	13,020	12,404	68,222,672	16,883,820	4,095	3,974	37,331,432	9,421,068
	Q2		17,217		26,510,520		13,051		17,339,430		4,166		9,171,091
	Q3		17,517		26,682,350		13,308		17,187,870		4,209		9,494,482
	Q4		17,796		25,972,700		13,484		16,727,910		4,312		9,244,791
2011	Q1	18,069	17,684	109,018,240	27,889,220	13,679	13,331	68,007,480	17,282,860	4,390	4,353	41,010,760	10,606,360
	Q2		18,191		27,222,030		13,695		17,385,220		4,496		9,836,813
	Q3		18,810		27,804,080		14,301		17,340,210		4,509		10,463,880
	Q4		18,087		26,047,990		13,581		15,944,280		4,506		10,103,710
2012	Q1	15,622	17,932	91,358,160	26,571,280	11,117	13,203	49,311,848	15,171,750	4,505	4,729	42,046,316	11,399,530
	Q2		16,278		22,924,670		11,731		12,568,670		4,547		10,356,000
	Q3		14,406		21,173,110		9,892		11,094,450		4,514		10,078,670
	Q4		14,107		20,555,240		9,564		10,343,130		4,543		10,212,120
2013	Q1	12,550	13,223	80,359,000	20,590,860	8,239	8,897	39,480,036	10,144,620	4,310	4,326	40,878,964	10,446,240
	Q2		12,882		20,752,660		8,490		10,464,560		4,392		10,288,110
	Q3		12,548		19,876,820		8,180		9,667,612		4,368		10,209,210
	Q4		11,892		19,081,980		7,443		9,146,575		4,449		9,935,408
2014	Q1	11,508	11,790	77,468,336	19,494,440	7,242	7,366	37,499,304	8,969,519	4,267	4,424	39,969,028	10,524,930
	Q2		11,574		19,864,630		7,447		10,240,600		4,127		9,624,035
	Q3		11,681		19,866,500		7,239		9,742,734		4,442		10,123,770
	Q4		11,619		18,204,500		7,186		8,508,199		4,433		9,696,298
2015	Q1	9,493	10,465	61,424,920	16,938,520	5,897	6,639	28,000,918	7,788,933	3,597	3,826	33,424,002	9,149,591
	Q2		9,674		15,817,610		5,958		7,421,363		3,716		8,396,251
	Q3		9,094		15,574,200		5,579		6,867,600		3,515		8,706,595
	Q4		8,401		12,884,260		5,077		5,712,695		3,324		7,171,565
2016	Q1	6,580	7,022	42,773,250	11,407,838	3,860	4,087	16,889,605	4,643,300	2,720	2,935	25,883,645	6,764,538
	Q2		6,539		9,928,305		3,835		3,989,977		2,704		5,938,328
	Q3		6,302		10,276,810		3,692		3,812,385		2,610		6,464,425
	Q4		6,456		11,160,297		3,824		4,443,943		2,632		6,716,354
2017	Q1	6,599	6,550	41,714,506	11,438,661	4,039	3,956	18,108,948	4,678,957	2,560	2,594	23,605,558	6,759,704
	Q2		6,555		10,536,178		3,951		4,587,255		2,604		5,948,923
	Q3		6,657		9,791,107		4,115		4,207,783		2,542		5,583,324
	Q4		6,633		9,948,560		4,134		4,634,953		2,499		5,313,607
2018	Q1		6,294		10,213,276		3,948		4,455,523		2,346		5,757,753
	Q2		6,238		9,786,955		3,909		4,175,547		2,329		5,611,408

In order to provide the public with timely access to these data, this report uses the best-available estimate for each factor at the time of publication. Data for Q2-2018 are preliminary and subject to revision. Data for previous dates have been revised.

This report is produced by the Kentucky Energy and Environment Cabinet using data from numerous sources including the U.S. Department of Labor's Mine Safety Health Administration, the Kentucky Department of Revenue, and the Kentucky Division of Mine Safety.

To check for an updated version of this report or for more detailed information on coal production in Kentucky, please visit us online at: energy.ky.gov/Pages/CoalFacts.aspx